

O'Neill Area Chamber of Commerce  
125 South 4th Street  
O'Neill, NE 68763  
\*\*\*Return Service Requested\*\*\*



US STANDARD  
POSTAGE PAID  
O'NEILL, NE 68763  
PERMIT #4

# February 2025

## CHAMBER OF COMMERCE CHAMBER CHATTER

HAPPY VALENTINE'S DAY! February is the month of the heart. We will be giving and receiving hearts for Valentine's Day, but it's also a great month to have your heart checked! We want every one of you to be at the heart of our community for many years to come! Have you thought about what you are going to get your Valentine this year? Be sure to SHOP LOCAL this Valentines Day! Our local businesses are always happy to help you find exactly what you are looking for. If you can't find it, ASK!!! You can always do gift cards and certificates too. There are many options to choose from—jewelry, candy, flowers, food, pampering, clothes, candles and so much more. Make your dining reservations in advance to help the restaurants know how many people to expect.

Are you ready to start thinking "green"? St. Pat's is only a few weeks away! The theme for the parade this year is "Peace, Love and Irish". You will find a parade entry form inside. I am working on the 2025 St. Pat's schedule so please send me your events as soon as possible. So far, we know there will be "Miles From Dublin" at the community center on Thursday night, an illusionist on Friday night at the community center, the Fun Run, Irish Dancers and the Parade on Saturday. If you have something to add to this list, please let me know. We always like to get the posters done by the middle of February! As soon as the t-shirts are selected, printed and on sale, I will let everyone know. We want those available around the first of March.

Have you sent in your nominations for the Community Service Award, Customer Service Award and the Community Ambassador Award? Please send your nomination's name and write up to the chamber office at lauri@oneillchamber.com. We need plenty of time to get the awards ready, so please send your nomination soon!

While we are working hard on St. Pat's, we are also working on Summerfest! We have added an event on Thursday, July 17th! Joseph Hall, an Elvis Tribute Artist will be at the community Center for a 7pm show that evening. Joseph will do a show called "Reflections of the King" that goes through all the different eras of Elvis with a number of costume changes. Joseph has made six appearances on America's Got Talent and is also recognized by Elvis Presley Enterprises out of Memphis, Tennessee as one of the top Elvis Tribute Artists in the world! And he will be right here in O'Neill, NE on July 17th! Pencil it in on your calendar now. More information on ticket prices when the time gets closer. Saturday night we have Sunset Sinners opening for Sam Barber at the community center parking lot. Tickets are on sale now at [www.oneillchamber.com](http://www.oneillchamber.com). Great Valentine's Day Gift!! Tuck a couple tickets in your Valentine's Day Cards!

## Board of Directors

Chairman of the Board, Dr. Trent Shoemaker—Revelation Wellness

Treasurer, Joel Steinhauser—Tri County Bank

## DIRECTORS

Holly Cole—AseraCare Hospice

Terry Miles—Holt County Independent

Scott Poesé—KBRX

Jana Sobotka—Sobotka Trucking

Megan Heiss—Blush Boutique and Tan and Stracke Realty

Kyle Sanderson—Pinnacle Bank

Bryan Hoefler—Farmers National Company

Michael Hedlund—Thrivent Financial Services

Dan Krugman—Biglin's Mortuary

Lauri Havranek—President/CEO - 125 S. 4th Street—O'Neill, NE 68763

Phone: (402)-336-2355 Email: [lauri@oneillchamber.com](mailto:lauri@oneillchamber.com)

FACEBOOK: O'Neill, Nebraska Chamber of Commerce

[www.oneillchamber.com](http://www.oneillchamber.com)

### MEMBERSHIP RENEWALS

Upper Elkhorn NRD \*\*\*\* Rowse Hydraulic Rakes Co., Inc.  
Bosselman Pump & Pantry \*\*\*\* The Advisor  
Leonard Management, McDonalds \*\*\*\* Handlebend  
Uptown Cooking Creations \*\*\*\* Dana F. Cole & Company  
Edward Jones, Adam, Cadwell \*\*\*\* Behind the Lens by Tara  
Boardman's Furniture and Pawn \*\*\*\* Bonnie Hines

THANK YOU FOR YOUR CONTINUED SUPPORT

### WELCOME NEW MEMBERS

Double Play Apparel & Engraving

Holt Co. Freeze Dried

Jake Graff—Family Heritage Insurance



# EXCITING NEWS FROM TWIG FLOWER AND GIFT



**\*\*NEW SERVICE\*\*** Hey everyone! We are so excited to announce that we are providing a new service at Twig! Flower preservation art/arrangements!! We are offering 2 types of preservation items! Shadowbox (preserved as is) arrangements (perfect for wedding bridal bouquets)! This type is as pictured. The second type is pressed flower art either on canvas or framed. We have done quite a few of these but have missed getting pictures of them! Be sure to keep an eye on our stories to see upcoming pressed flower art!! What kind of things can we preserve? Weddings, funerals, birthdays, anniversaries, whatever your heart desires! We are so excited to jump off with new beauties!!

# Date Night in WINTER WONDERLAND

Thursday, February 6th

A date night for Daughters and their Dads (or any special role model)



\$30 per Dad and Daughter  
\$8 for each additional Daughter

Enjoy the following:  
2 Meals  
Photo Booth  
Ice Cream Cupcakes  
A Magical Experience  
Memories for a LIFETIME

CALL 402-809-1609 TO RSVP!

5:00pm 5:45pm  
6:30pm 7:15pm



**\$\$\$BUYING\$\$\$**

**COINS**  
Silver & Gold Coins & Bullion  
Collector Coins (Pennies to Silver Dollars, Proof Sets, Tokens, & More!)

**JEWELRY**  
10K-14K-18K Gold Rings  
Chains, Pins, Etc. • Dental Gold  
Gold Watches • Pocket Watches  
Black Hills Gold

**ANYTHING STERLING**  
Sterlingware • Jewelry • Medals • Plates, Etc.

**ESTATES PURCHASED**

**402-336-1240**  
KEN "The Coin Guy" • O'Neill, NE  
MEMBER: O'NEILL CHAMBER OF COMMERCE



Every First Saturday of the month

At 9 a.m. beginning Feb. 1.

Douglas Street Coffee

229 W. Douglas

This study is for high schoolers on up and men from every denomination or those seeking Christ.

Questions call Pastor Bob

402-340-2447

**HOOLIGANS PUB**  
Presents  
**The Chili Bowl**  
CANINE vs FELINE  
FEB 8, 2025  
11:30 A TO 3 P  
Chili Cookoff

**Catnips from the Feline Foundation**  
Come on out to Hooligans Pub Feb 8th and put your taste buds to work! The Chili Bowl is a fundraising cook off between the Feline Foundation & Holt County Animal Shelter! This is a blind taste testing competition where only 1 person will know which roaster holds each charity's specialty chili so it will be a fair competition! There will be judge's choice & people's choice judging. Each roaster will have a donation can in front of them. Whichever chili you like best is the can you put your \$1.00 in.  
At the end of the contest, the donations from each can will be tallied to see who wins bragging rights! We have several generous bakers making their special homemade cinnamon rolls to enjoy with your chili.  
Each charity will also have their own silent auction table for your bidding fun!!  
The winners will also be announced from the raffle ticket sales. 1st place will be The Oklahoma Joe Pellet grill & pizza pan on display at Krotters Home. Thank you Deb & Mike Kelly for this donation! 2nd place is half a quarter of Angus Beef donated by Spring Lake Angus. Thank you Gene & Kelsey! 3rd place is a 20-24 pound Longhorn Beef

\$5 entry fee for taste testers.  
People's choice & Judge's choice.  
The winner gets bragging rights!

Raffle winners will be announced

Each rescue will be having a silent auction

kit donated by DH Longhorn. Thank you Don & Rachel! We hope you can join us for a few hours of fun!!!

**O'NEILL FIREFIGHTERS APPRECIATION DANCE**  
**OUTBACK VARIETY BAND**

FEBRUARY 8TH, 2025 - 8PM - 12AM  
O'NEILL COMMUNITY CENTER - O'NEILL, NE  
FOOD AVAILABLE  
DOOR PRIZES THROUGHOUT THE NIGHT

SOME OF THE FIREFIGHTER CREW FROM 2024

Miles from Dublin will be playing Irish music at the O'Neill Community Center during the St. Patrick's Day festivities. There is no charge for this event, which is sponsored by the Friends of the O'Neill Library. Miles from Dublin is a four-man band from Kearney, Nebraska. They will perform at the O'Neill Community Center on Thursday, March 13th, from 5:30-7:00 p.m. The Friends of the Library will serve Reuben sandwiches, chips, and bars or cookies for a free will offering. The O'Neill Knights of Columbus will man the cash bar. Come and enjoy this St. Patrick's Day celebration on Thursday, March 13th.

**CREATIVE ADVANTAGES**  
MAXIMIZE YOUR BUSINESS POTENTIAL

- Business & Marketing Consulting
- Web Designs
- Brand Kits
- Graphic Design
- Social Media Management
- Social Media Consulting
- And much more!

ABBY BIRKEL  
Founder Business & Marketing Consulting Specialist

OLIVIA FOSTER  
Web & Graphic Designer Content Editor SEO Specialist

HANNAH GREENE-GRETZINGER  
Video & Social Media Specialist

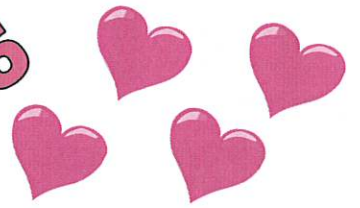
ETHAN WIEKAMP  
SEO & Marketing Specialist

402.340.9661 creativeadvantages.org



# February

2025



February 1—9am—Saturday Morning Men's Bible Study at Douglas Street Coffee—This study is for high schoolers and men from every denomination or those seeking Christ

February 2—Groundhog Day

February 3—6:30pm—City Council Meeting at 401 E. Fremont

February 4—5pm to 8pm—Holt County Annex—Financial aspects of Estate and Transfer Plans

February 5 and 6—10a to 7pm—KBRX Farm and Home Show at the O'Neill Community Center

February 6—11am to 1pm—Basic Needs Pantry at the O'Neill Methodist Church—404 Cedar Street

February 6—Noon to 4pm—NCDHD Vaccination Clinic at the O'Neill Public Library

February 6—5pm—Date Night in Winter Wonderland Event at Dairy Queen—Call 402-809-1609 to RSVP

February 6—7pm to 9pm—Bingo at Handlebend sponsored by Bank First

February 7—Noon—Holt County Visitors Committee meeting at the Holt County Tourism Office

February 7—7pm—Pitch Night at Hooligan's Pub

February 8—8am to 10am—Free Will Pancake and Sausage Feed at the O'Neill Methodist Church—404 Cedar Street—Everyone Welcome!

February 8—11:30am to 3pm—The Chili Bowl at Hooligans Pub—Chili Cookoff Between the Irish Capital Feline Foundation and the Holt County Animal Shelter

February 8—6pm to 10pm—Handlebend Building 5 Year Anniversary

February 8—8pm to Midnight—O'Neill Firefighters Appreciation Dance at the O'Neill Community Center—There will be food available and door prizes throughout the night

February 11—8am—O'Neill Visionaries Meeting at Handlebend

February 11—5pm to 8pm—Legally Putting Your Plan in Place Seminar at the Holt County Extension Office

February 12—Noon—Chamber of Commerce Board of Directors Meeting at the Chamber Office

February 13—Noon to 4pm—NCDHD Vaccination Clinic at the O'Neill Public Library

February 14—20% off Combo Meals at Neko's Pub for Valentine's Day

February 15—9pm—Karaoke at Neko's Pub

February 16—4pm to 6pm—Bingo at Handlebend sponsored by the Holt Boyd Community Connections Collaborative

February 20—11ma to 1pm—Basic Needs Pantry at the O'Neill Methodist Church

February 20—Noon to 4pm—NCDHD Vaccination Clinic at the O'Neill Public Library

February 20—7pm to 9pm—Trivia Night at Handlebend—Sign up at [Handlebend.com/trivia](http://Handlebend.com/trivia)

February 22—11am—Check in begins for the Handlebend Cornhole Tournament at the Handlebend Building—\$20 per team of two people—sign up at [handlebend.com/cornhole](http://handlebend.com/cornhole)

February 26—Noon—Summerfest Rodeo Committee Meeting at the Chamber Office

February 26—8pm—Open Mic Night at Handlebend

February 27—Noon to 4pm—NCDHD Vaccination Clinic at the O'Neill Public Library

February 28—7pm—Bingo Night at the O'Neill Methodist Church



\*\*\*\*\*NEKO'S PUB\*\*\*\*\*

**EVERY WEDNESDAY—\$5 WING NIGHT—DINE IN ONLY**

**EVERY FRIDAY—\$20 CASH LARGE PIZZA**

**DINE IN OR CARRY OUT**



HB

SATURDAY, FEB. 8TH 6:00PM - 10:00PM

# FIVE YEAR ANNIVERSARY

## Party

LIVE MUSIC BY EMMA SUE + SAM DREY

5 years ago, the Shelhamer building had a Handlebend sign hung on it. When they tore into the project, their goal was to breathe new life into the old and storied building—to bring back some of the community that happened within those walls all those years ago. We cannot believe it's been 5 years, but you know what they say about time flying and having fun! This 1/2 decade has been filled with so much support, so many good times and countless new friends made. They said it at their grand opening: this project was built BY the community with the goal of building community. This doesn't happen without you! It really takes a village. Come and help them celebrate on February 8th from 6pm to 10pm! Cheers to 5 years!



HANDLEBEND

# CORNHOLE TOURNAMENT

FEBRUARY 22ND, 11 AM | \$20 TEAM BUY IN  
sign up: [handlebend.com/cornhole](http://handlebend.com/cornhole)

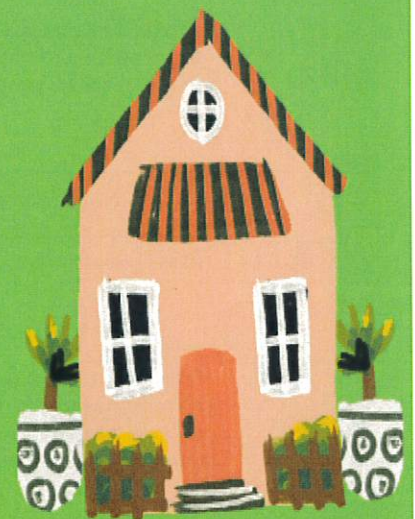
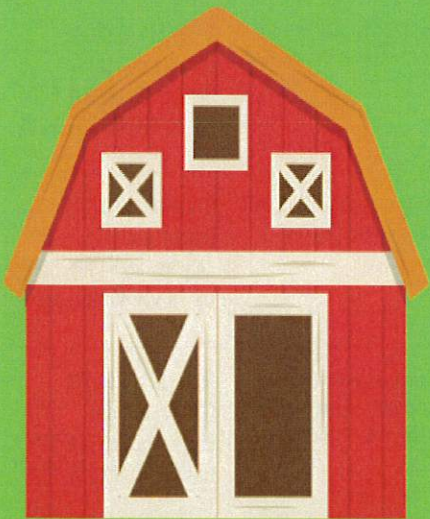
Come compete in our Corn Hole Tournament on Saturday, February 22nd! Teams of two with a \$20 buy-in per team. Prizes will be awarded to the top three teams, with amounts varying based on the total number of teams. Check-in begins at 11 AM. Pre-register your team in advance, or sign up on the day of the event! Sign-up: [handlebend.com/cornhole](http://handlebend.com/cornhole)



**KBRX**  
TOP DOG IN COUNTRY  
102.9 FM | [KBRX.COM](http://KBRX.COM)



# FARM & HOME SHOW



**FEBRUARY 5 & 6, 2025**  
**O'NEILL COMMUNITY CENTER**

Over 45 vendors and Uptown Cooking Creations serving delicious food. 10-7 Wednesday and Thursday, Feb 5 & 6.





[northeast.edu](http://northeast.edu)

An essential part of any successful business plan is to make sure that your employees have up-to-date training. Becoming a Northeast Nebraska Workforce Partner will put you in a position to jump ahead of the competition by maximizing your training investment. In this joint effort, training is being offered to give business leaders and staff opportunities for personal and professional growth close to home. The cost per course is \$150/person. **Please register at this link: <https://forms.office.com/r/HFgV6yQ5i5>**

TRAINING DATE	COURSE DESCRIPTION	TIME   LOCATION
02.13.25	Developing Teamwork: Teamwork is the ability to work together toward a common vision. It is the ability to direct individual accomplishments toward organizational objectives. It is the fuel that allows common people to attain "uncommon results." In this course, you will implement the 16 steps to build a high-performance team; understand the difference between "groups" and "teams"; identify the four phases of team building; discuss the 12 vital signs of healthy teams; and develop trust among members of the team. CRN70062	9:00 AM - 12:00 PM O'Neill Extended Campus, Room 104, 505 US-20 PH: 402.336.3590
03.06.25	Critical Thinking is the willingness to imagine or remain open to considering alternative perspectives, willingness to integrate new or revised perspectives into our ways of thinking and acting, and willingness to foster criticality in others. Critical Thinking clarifies goals, examines assumptions, discerns hidden values, evaluates evidence, and assesses conclusions. A critical thinker is open-minded, well-informed, judges well the credibility of sources, identifies assumptions, develops, and defends a reasonable position, and draws conclusions. CRN70059	9:00 AM - 12:00 PM O'Neill Extended Campus, Room 104, 505 US-20 PH: 402.336.3590
03.27.25	Engaging and Motivating Others: Effective leaders motivate and engage all the people who are connected to the organization. This not only includes the employees at every level, from front line to the executives, but also the customers and other stakeholders like investors and board members. This session will show you how to get the most out of your teams. CRN70068	9:00 AM - 12:00 PM O'Neill Extended Campus, Room 104, 505 US-20 PH: 402.336.3590
04.17.25	Celebrating Diversity and Practicing Inclusion: Diversity in the workplace can be challenging. However, approaching it mindfully and purposefully, can turn challenges into opportunities for inclusion and growth. Learn how developing an environment of inclusion, understanding, and respect can positively impact employees and the organization alike. CRN70065	9:00 AM - 12:00 PM O'Neill Extended Campus, Room 104, 505 US-20 PH: 402.336.3590
05.08.25	Getting Comfortable with Public Speaking: It's been shown that people fear public speaking more than death, yet few have learned practical ways to overcome this phobia. If fear of public speaking has kept you from seeking a promotion, speaking up in meetings, speaking at church, or just enjoying day- to-day activities, this workshop is for you! Students will learn the physiology and psychology behind their fear and how they can retrain their brains by facing their fears in a warm, safe, and supportive environment. CRN70073	9:00 AM - 12:00 PM O'Neill Extended Campus, Room 104, 505 US-20 PH: 402.336.3590
05.22.25	Workplace Stress - Beat Burnout: Positive and negative stress is a constant influence on all our lives. The trick is to maximize the positive stress and to minimize the negative stress. Learn techniques to cope with heavy workloads, demanding expectations and the daily dramas that lead to stress and eventual burnout. Increase your mental toughness and stop being distracted by negative emotions. Refocus your time and energy and learn to take ownership and responsibility for things and situations that you don't like. CRN70072	9:00 AM - 12:00 PM O'Neill Extended Campus, Room 104, 505 US-20 PH: 402.336.3590

If you are interested in purchasing multiple seats at a discount, please contact Jim McCarville - [jamesam@northeast.edu](mailto:jamesam@northeast.edu) | 402-844-7238



Northeast does not discriminate based upon any status protected by law or college policy. Please go to [northeast.edu/nondiscrimination](http://northeast.edu/nondiscrimination) for details.



# NORTH CENTRAL NEBRASKA



## CHALLENGE

March 11th, 2025  
O'Neill Community Center

The North Central Nebraska Youth Entrepreneurship Challenge is an inspiring event designed to empower young innovators by providing a platform to showcase their creative business ideas and entrepreneurial skills. The event is taking place on Tuesday, March 11th, 2025 from 9:30am - 12pm at the O'Neill Community Center and have several schools from the area participating. Over \$5,000 in prizes will be awarded to the student entrepreneurs to use as an investment into their business or for other educational purposes.

Participants have the opportunity to present their projects to a panel of experienced mentors and industry professionals, gaining valuable feedback and insights. The challenge fosters collaboration, critical thinking, and real-world problem-solving, encouraging participants to explore innovative solutions and develop practical business strategies.

Scott Poesse of KBRX radio in O'Neill will be the emcee of the awards ceremony beginning at 2:00pm.



Get

your Valentine an evening to remember by purchasing tickets to see the Sunset Sinners opening for Sam Barber on Saturday, July 19th, 2025 in the O'Neill Community Center Parking Lot! Tickets are on sale now at [www.oneillchamber.com](http://www.oneillchamber.com)



REGION 629  
O'NEILL AND  
SURROUNDING AREAS

2025

AYSO

(AMERICAN YOUTH SOCCER ORGANIZATION)



REGISTER PLAYERS & VOLUNTEERS AT [AYS0629.ORG](http://AYS0629.ORG)

IF YOU ARE FINANCIALLY UNABLE TO PAY, PLEASE CONTACT US ABOUT A SCHOLARSHIP. LIMITED SCHOLARSHIPS AVAILABLE!

FOLLOW US ON: @ONEILL AREA AYSO REGION 629 @AYSOREG629

FOR HELP, OR TO LEARN ABOUT VOLUNTEER OPPORTUNITIES, PLEASE CONTACT:

MARIA MORALES  
REGIONAL COMMISSIONER  
402.336.6599  
AYSOREG629@GMAIL.COM

JACEY NAPIER  
ASSISTANT REGIONAL COMMISSIONER  
ASSISTRCA29AYS0@GMAIL.COM



REGION 629  
O'NEILL Y AREAS  
ALREDEDOR

2025

AYSO

(AMERICAN YOUTH SOCCER ORGANIZATION)



REGISTREN JUGADORES Y VOLUNTARIOS EN [AYS0629.ORG](http://AYS0629.ORG)

SI FINANCIAMENTE NO PUEDE PAGAR POR EL PROGRAMA, PORFAVOR CONTACTENSE CON NOSOTROS SOBRE COMO APLICAR PARA RECIBIR UNA BECA LAS BECAS DISPONIBLES SON LIMITADAS!

SIGAN NOS EN: @ONEILL AREA AYSO REGION 629 @AYSOREG629

PARA AYUDA, O PARA APRENDER MAS SOBRE OPORTUNIDADES VOLUNTARIAS CONTACTENSE CON:

MARIA MORALES  
COMISIONADA REGIONAL  
402.336.6599  
AYSOREG629@GMAIL.COM

JACEY NAPIER  
ASISTENTE COMISIONADA REGIONAL  
ASSISTRCA29AYS0@GMAIL.COM

**DONATION REQUEST**

Scan the QR Code

Donations & Sponsorships | Food, Utensils, etc. | McD Swag | Coupons & Gift Cards

All donation and sponsorship requests must be submitted no less than 60 days from the event date AND include a completed W-9 form. Submission without a W-9 will be delayed and risk not being approved. Requests will be reviewed and fulfilled within 4-6 weeks of submission.

Property of Leonard Management, Inc. | [www.leonardmcd.com](http://www.leonardmcd.com)

Here is the information regarding donations from McDonalds. Scan the QR code to get to the website!

## WE ARE STILL COLLECTING SHOES!!

Even though the Holt County Animal Shelter reached their shoe drive goal just recently, the shoe collection isn't over. They can receive this grant multiple times if they collect enough shoes! SO, when you clean out those closets and have a bunch of stuff to take to the Goodwill trailer when it's here in town, keep those shoes separate and drop them off here at the chamber office! Spring cleaning? Bring us the shoes! Tired of all the shoes you have? Bring them to us and make room in your closet for new ones! We have our tote open and ready to accept shoes ALL THE TIME! Let's help the HCAS get another grant.





## FARM AND RANCH WELDING

This course is designed to cover basic welding skills for farm and ranch purposes. Safe use of equipment is emphasized. Students will receive basic instruction and participate in hands-on experiences using oxyfuel welding, cutting, and shielded metal arc welding and gas metal arc welding (MIG). 2 credit hours

### Supplies needed:

Welding helmet, welding skull cap, welding shirt or sleeves, leather shoes/boots, welding gloves, pliers and safety glasses.

Please note that there are two required books:

- Gas Metal Arc Welding Basic  
ISBN 2901936-058067-Cost with tax: \$37.45
- Shielded Metal Arc Welding Basic  
ISBN 9781936-058006-Cost with tax: \$37.45
- **TOTAL FOR BOOKS: \$74.90**

**February 28 – April 4, 2025**

**Fridays, 4:30 pm – 9:30 pm**

**Course ID: WELD1991/CRN#26393**

**Instructor: Robert Stout**

**Cost: \$256.00**

**Location:** Northeast Community College  
O'Neill Extended Campus, Room 132/133  
505 East Highway 20, O'Neill, NE 68763

**CALL:** 402-336-3590 or 800-421-6322

**FAX:** 402-336-1103

**EMAIL:** [merri@northeast.edu](mailto:merri@northeast.edu) or  
[tbockman@northeast.edu](mailto:tbockman@northeast.edu)

**Northeast**  
community college

801 E. Benjamin Ave. | Norfolk, Nebraska  
800-384-9033 | [northeast.edu](http://northeast.edu)







# ARBOR CARE CENTER OF O'NEILL NEEDS YOU!!



WE HAVE THE CURRENT OPENINGS: 1 FULL TIME NIGHT CNA  
1 FULL TIME DAY CNA  
1 PART TIME EVENING CNA

ARE YOU READY FOR A CHANGE? COME JOIN AN AMAZING TEAM AND HELP  
MAKE A DIFFERENCE!  
EXCELLENT PAY AND BENEFITS!  
CONTACT JENNIFER, DIRECTOR OF NURSING AT 402.336.2384  
TODAY!



The Holt County Animal Shelter concluded their shoe fundraiser in January! They sent off 103 bags of shoes, for a total of 2,575 shoes! We don't know for certain the grant amount will be, but once we know we'll share that info. We will be doing the shoe drive again, as we do have left over shoes, but this time during the summer when it's not so cold and dark loading the truck!

Join us, and the Irish Capital Feline Foundation February 8<sup>th</sup> at Hooligan's Pub at 11:30am for the Cats Vs Dogs Chili Bowl! We will be having a silent auction, along with a raffle, and of course chili and cinnamon rolls!

Our adoption totals for 2024 were 14. So far in 2025 we've placed 2 dogs. Since we're no longer handling OPD dogs, our intake numbers are down. Since opening the doors at 500 S Logan in 2013 we have helped 925 dogs.

Now that we have moved some long term animals, we will be able to do more intakes. Once again, we would like to thank our supporters. As you know, we are funded solely by donations, and grants! Without you, HCAS would not be able to continue being an asset to Holt County!

## Meatloaf Monday

A homemade meatloaf recipe passed down for generations! Enjoy it with a choice of side and the veggie of the day.

## Steak Tip Tuesday

Butter Garlic sirloin steak tips pan fried crispy chunks of potato. Add mushrooms and or onions for extra flavor. Or try it with an order of eggs to make it breakfast! Comes with a choice of side.

## Crispy Chicken Wednesday

A hand breaded crispy chicken breast served with lettuce, tomato, and copycat chick-fil-a sauce on a butter toasted bun. Comes with your choice of side.

## Thursday

Chef's Choice! On this day we let the cook's test their creativity! Keep an eye on our Facebook page to see the creations they come up with!

## New Winter Time Specials!

### Bull Fry Friday

Come in for 8 ounces of bull fries, your choice of side and our salad bar!

### Steak Night Saturday

Saturday will consist of specials made up of different kinds of steaks. This could range from Ribeye, Flat Iron, Sirloin, Country fried Steak, T-Bones, etc. All steaks will come with a choice of side and salad bar.

### Sunday

Sunday specials will be breakfast themed!

Starting January 20th

## Methodist Church

## Pancake & Sausage Feed

Pancake  
Breakfast



Saturday February 8<sup>th</sup>

8-10 am

Methodist Church 404 Cedar St.

Free Will Offering!



# MEALS ON WHEELS

## FEBRUARY 2025 MENU

MONDAY	TUESDAY	WEDNESDAY	THURSDAY	FRIDAY
3	4	5	6	7
CHICKEN & RICE	BARBECUE MEATBALLS	BREADED CHICKEN	SLOPPY JOE	CHEF SALAD
SWEET POTATOES	HASHBROWN BAKE	MASHED POTATOES	MACARONI & CHEESE	CARROTS & CELERY
BROCCOLI & CHEESE	GREEN BEANS	& GRAVY	BAKED BEANS	APPLE
PEACHES	PINEAPPLE	CORN	TROPICAL FRUIT	CRACKERS
GARLIC BREAD	CHERRY CRISP	BISCUIT		
		PEARS		
10	11	12	13	14
PIZZA BOAT	BAKED PORK CUTLET	BBQ PULLED CHICKEN	HOT HAM & CHEESE	MEATLOAF
TRI TATOR	MASHED SWEET POT.	SANDWICH	SANDWICH	BABY BAKERS
BEETS	ROASTED CAULIFLOWER	POTATO SALAD	ROASTED RED POTATOES	CALIFORNIA BLEND
FRUIT COCKTAIL	& BROCCOLI	TOMATO VEG. SALAD	ASPARAGUS	APPLESAUCE
	APRICOTS	MANDARIN ORANGES	TROPICAL FRUIT	VALENTINE TREAT
	CREAM CHEESE BROWNIE			
17	18	19	20	21
FRENCH TOAST CASS.	TURKEY	SALISBURY STEAK	BAKED PORK CHOP	LASAGNA
SAUSAGE PATTY	MASHED SWEET POT.	SCALLOPED POTATOES	BABY BAKER	WAX BEANS
TRI TATOR	PEAS & CARROTS	GREEN BEANS	HARVARD BEETS	GARLIC BREAD
BANANA	PEARS	BLUSHING APPLESAUCE	APRICOTS	SPINACH SALAD
ORANGE	GERMAN CHOCOLATE		MUFFIN	MANDARIN ORANGES
	CAKE			
24	25	26	27	28
TATOR TOT CASSEROLE	BEEF TIPS	SWEET & SOUR CHICKEN	OVEN BAKED COD	PULLED PORK SAND.
CARROTS	NOODLES	STEAMED RICE	RICE PILAF	POTATO WEDGES
FRUIT COCKTAIL	STEAMED BROCCOLI	STIR FRY VEGGIES	BRUSSEL SPROUTS	MIXED VEGGIES
	PINEAPPLE	EGG ROLL	MANDARIN ORANGES	PEACHES
	CHOC. PEANUT CLUSTER	APRICOTS		

**PLEASE GIVE 24 HOUR NOTICE  
FOR RESERVATIONS OR CANCELLATIONS.  
(402) 340-5426**

ALL MEALS ARE SERVED WITH MILK, BREAD, AND BUTTER UNLESS OTHERWISE INDICATED.  
60+ WE ASK FOR A SUGGESTED CONTRIBUTION OF \$6.50. 59 UNDER PRICE IS \$8.50.



## The Evergreen Meals on Wheels

The Evergreen Meals on Wheels program offers home delivered, to go, and dine in meal options. We are located at the south entrance on the independent side of the Evergreen at:

300 Jeanette Way O'Neill, NH

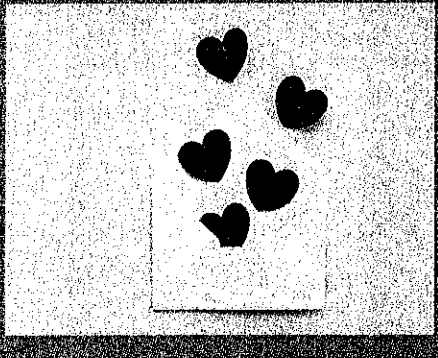
You can reach us by phone at:

(402) 340-5426

Meals are available Monday-Friday except major holidays.

A 24 hour advance notice is requested for reservations.

The suggested contribution amount is \$6.50 for individuals over 60 years of age and meals for individuals under the age of 60 are \$8.50.



# February 2025

## Happy Valentine's Day



Happy Valentine's Day! Along with Valentine's Day, February is filled with a lot of interesting and fun days. Look at the menu for the days we will be celebrating. There will be a Blood Pressure Clinic held on Wednesday February 12<sup>th</sup> from 10:30 am-11:30 am. Please enter through the south entrance of the Evergreen Independent Living on Jeanette Way.

### Interesting Days in February

February 2: National Groundhog Day

February 7: National Send a Card to a Friend Day

February 10: National Cream Cheese Brownie Day

February 13: National Cheddar Day

February 14: Happy Valentine's Day and National Organ Donor Day

February 17: President's Day and National Random Acts of Kindness Day

February 20: National Muffin Day

February 24: Flag Day

February 25<sup>th</sup>: National Chocolate Covered Nut Day



# 2025 ST. PATRICK'S DAY PARADE

The O'Neill Area Chamber of Commerce invites your organization and any other organization or individual from the area to participate in the 2025 St. Patrick's Day Parade to be held on **Saturday, March 15, at 1:00 P.M.** The theme is **"Peace Love and Irish."**

**ENTRY CATEGORIES:**

- 1. Commercial
- 2. Non-Commercial
- 3. Youth
- 4. Band
- 5. Horsemanship

## **Parade entries are not allowed to throw candy from vehicles or floats!**

**Someone must be walking on the street/sidewalk edge to pass out candy. Your cooperation in this matter is greatly appreciated.** In order to get first spots in the parade your entry must be received by, **March 12th.** Any entries received after this date will be placed in order received. Please have a description of your float on the entry form as we will **not** add this to your entry after **March 12th.** Thank you for your quick response.

\*\*\*\*\*

### 2025 ST. PATRICK'S DAY Parade Entry Form

**PARADE THEME: "Peace Love and Irish"**

**DATE: Saturday, March 15, 2025 TIME: 1:00 P.M.**

**LINE UP: 12:30 going north from 7<sup>th</sup> and Douglas**

Name of Float or Entry: \_\_\_\_\_

Address: \_\_\_\_\_

Category:    1. Commercial \_\_\_\_\_    2. Non-Commercial \_\_\_\_\_  
                  3. Youth \_\_\_\_\_            4. Band \_\_\_\_\_  
                  5. Horsemanship \_\_\_\_\_

Contact Person: \_\_\_\_\_

Phone: \_\_\_\_\_ Email: \_\_\_\_\_

Description: \_\_\_\_\_  
\_\_\_\_\_  
\_\_\_\_\_  
\_\_\_\_\_  
\_\_\_\_\_  
\_\_\_\_\_  
\_\_\_\_\_  
\_\_\_\_\_

**(Include all names you wish to have announced: Driver, float riders, etc. You may attach separate sheet.)**

Please return this form by March 12th, 2025 to:  
O'Neill Area Chamber of Commerce  
125 South 4<sup>th</sup> Street | O'Neill, NE 68763  
Phone: (402) 336-2355  
E-mail: lauri@oneillchamber.com | www.oneillchamber.com



